

# Industrial Warehouse in Outstanding Location 1101 Zerega Avenue / Bronx, NY



5840	Sq.Ft.	Office Space	\$19.00 /sq. ft.	\$110,960.00
1760	sq. ft.	Garage Space	\$10.00 /sq. ft.	\$17,600.00
52140	sq. ft.	Land	\$3.75/sq. ft.	\$195,525.00
<b>Annual Rent</b>				<b>\$324,085.00</b>
<b>Monthly Rent</b>				<b>\$27,007.08</b>

The above rent is based on a triple net lease. The Taxes are approximately \$70,000/year

## Contact:

**Ronald Pasquale**  
**Exclusive Broker**

25 Howard Street, 2nd Floor  
New York, New York 10013

T. 212-420-9435 x102

C. 914-469-2004

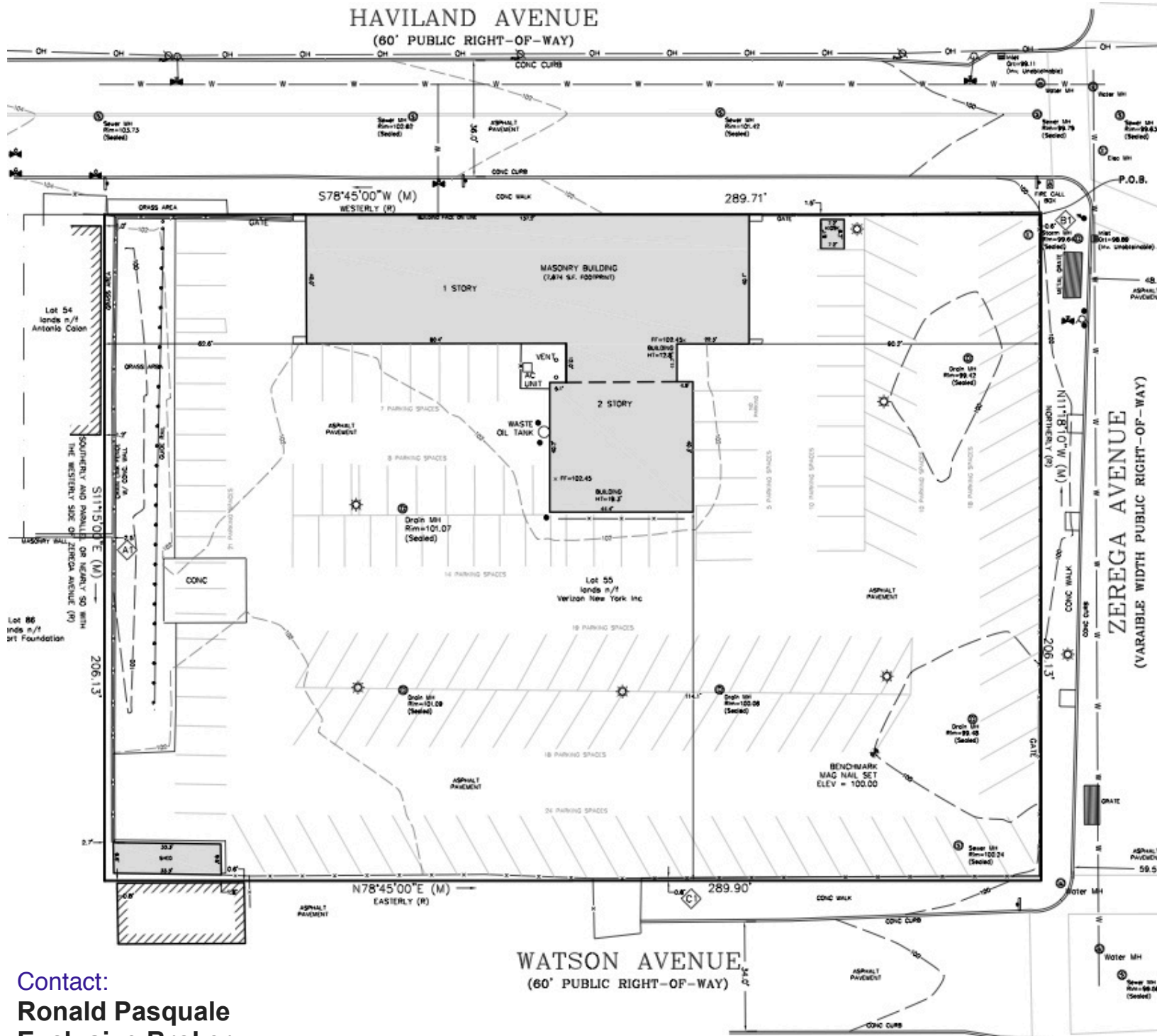
F. 212.420.9437

[pasquale45@aol.com](mailto:pasquale45@aol.com)

[www.nycrs.com](http://www.nycrs.com)



# Industrial Warehouse in Outstanding Location 1101 Zerega Avenue / Bronx, NY



Contact:  
**Ronald Pasquale**  
**Exclusive Broker**  
25 Howard Street, 2nd Floor  
New York, New York 10013  
T. 212-420-9435 x102  
C. 914-469-2004  
F. 212.420.9437  
[pasquale45@aol.com](mailto:pasquale45@aol.com)  
[www.nycrs.com](http://www.nycrs.com)

