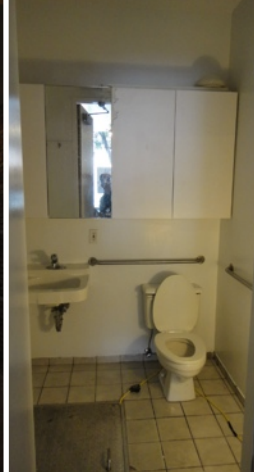


# Best Block in Nolita - Beautiful Turn-Key Retail Store

## 250 Mott Street (b/w Houston & Prince Street)



Neighboring Businesses:

HOUSTON STREET		
Ballato	MOTT STREET	TACOMBI
CIAO BELLA		TERRA PLANA
Poppy		REBECCA TAYLOR
VeKa		eco EARTH CONSCIOUS OFFICE
MOTTSU		RONY
La Coppola Storta		ROY BURCH
STAR STRINGS LLC		HUMINSKA NEW YORK
Agas & Tamar JEWELRY and DESIGN		Blue
sta SECOND TIME AROUND		botkier
		bit+piece NEW YORK
	Café Gitane	ELIZABETH STREET
PRINCE STREET		



### Prime 350 Square Foot Turn Key Retail Store on Mott St in Nolita (b/w Houston and Prince)

- \*Beautiful All Glass Frontage
- \*Recently Gutted and Renovated - Ready to Go!
- \*Store plus Full Dry Basement Accessible from inside Store
- \*Best Block in Nolita on the border of SOHO
- \*Air Conditioning
- \*Large Private Bathroom
- \*High Exposed Ceilings
- \*Exposed Brick
- \*Heavy 24/7 Foot Traffic Area
- \*All High End Designer Neighbors

~~\$7450~~ **Reduced to \$7250 per Month**

**Ken Brandman**  
President

T. 212.420.9435 x100  
C. 917-371-0132  
F. 212.420.9437  
ken@nycrs.com  
www.nycrs.com

