

NYCRS Featured Property

Beautiful Turn Key Restaurant for Lease in Flat Iron/ Gramercy Area



377 Park Avenue South

- *Bi-Level Space 1,500 SF Ground
- *500SF Mezzanine plus Full Basement with walk-in boxes and grease trap.
- *Any Use Considered
- *20' Ceilings
- *10 Year Lease
- *Asking \$23,000 Per Month
- ***No Key Money**
- *Previously had Full Liquor License

This newly renovated has very high ceilings, new full kitchen with vent, hardwood floors & glass storefront. Its directly next to Dos Caminos and across from The Hurricane Club, Gansevoort Park Avenue, Hotel Girafe, Primehouse and a plethora of high end restaurants and clubs.

James Famularo
Managing Director
T. 212.420.9435 x 103
C. 917.307.0111
jf@nycrs.com
www.nycrs.com

Ravi Idnani
T. 212.420.9435 x 120
C. 201.310.5670
ravi@nycrs.com
www.nycrs.com



NYCRS Featured Property



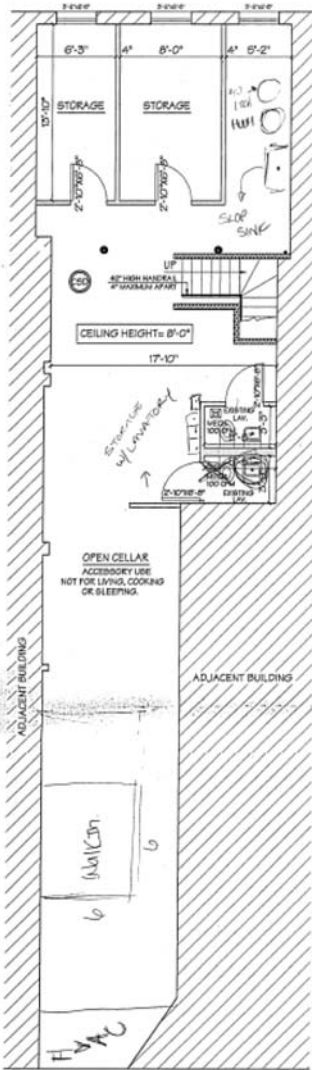
377 Park Avenue South

James Famularo
Managing Director
T. 212.420.9435 x 103
C. 917.307.0111
jf@nycrs.com
www.nycrs.com

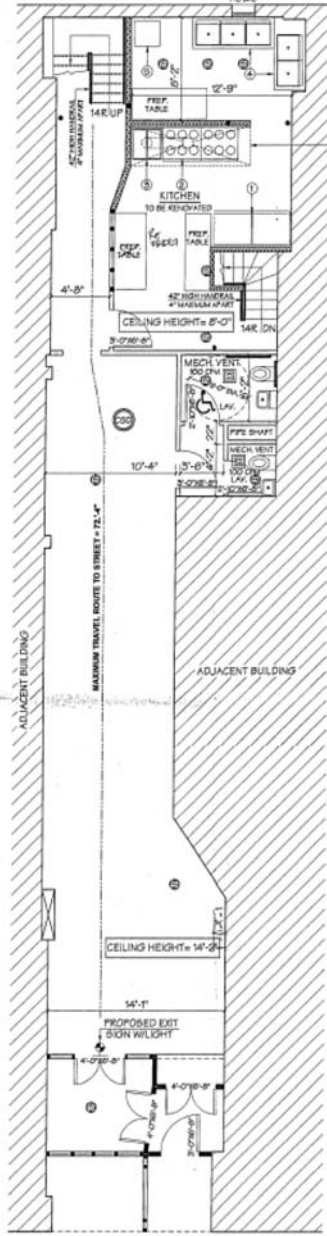
Ravi Idnani
T. 212.420.9435 x 120
C. 201.310.5670
ravi@nycrs.com
www.nycrs.com



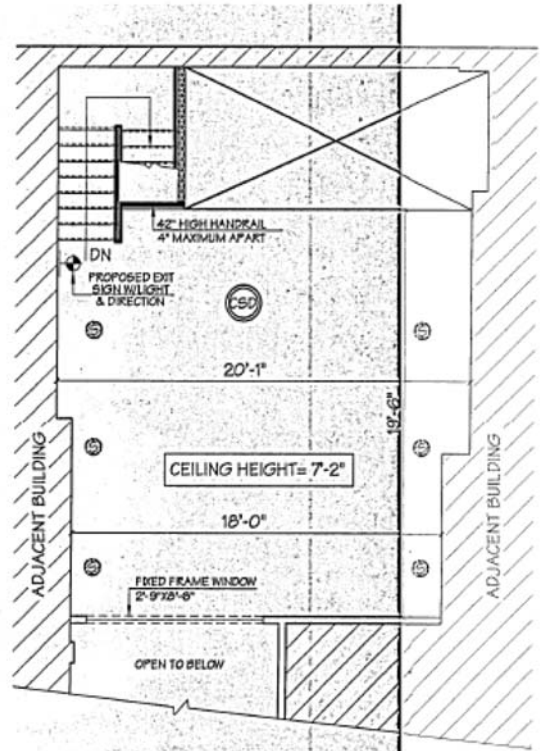
377 Park Avenue South



CELLAR FLOOR PLAN
EXISTING SCALE: 3/16" = 1'-0"



FLOOR AREA = 1046.14 S.F.
FIRST FLOOR PLAN
EXISTING SCALE: 3/16" = 1'-0"



FLOOR AREA = 419.40 S.F.
MEZZANINE FLOOR PLAN
EXISTING SCALE: 3/16" = 1'-0"



James Famularo
Managing Director
T. 212.420.9435 x 103
C. 917.307.0111
jf@nycrs.com
www.nycrs.com

Ravi Idnani
T. 212.420.9435 x 120
C. 201.310.5670
ravi@nycrs.com
www.nycrs.com

