

UNIQUE LOWER EAST SIDE RETAIL SPACE

164 LUDLOW STREET (EAST HOUSTON AND STANTON)



SIZE:
1,800 sf Ground plus Full Basement

RENT:
\$16,000 per month

DESCRIPTION:
Amazing Location at the center of the lower East Side. Open Space with no columns and high ceilings. Small Back Courtyard. All Uses Considered. Easily Vented for Restaurant use.

POSSESSION:
Immediate

NEIGHBORING TENANTS:
Katz's Deli, Mercury Lounge, Arlene's Grocery, Cake Shop, Hotel on Rivington, Beauty & Essex, Piano's, Stanton Social Club

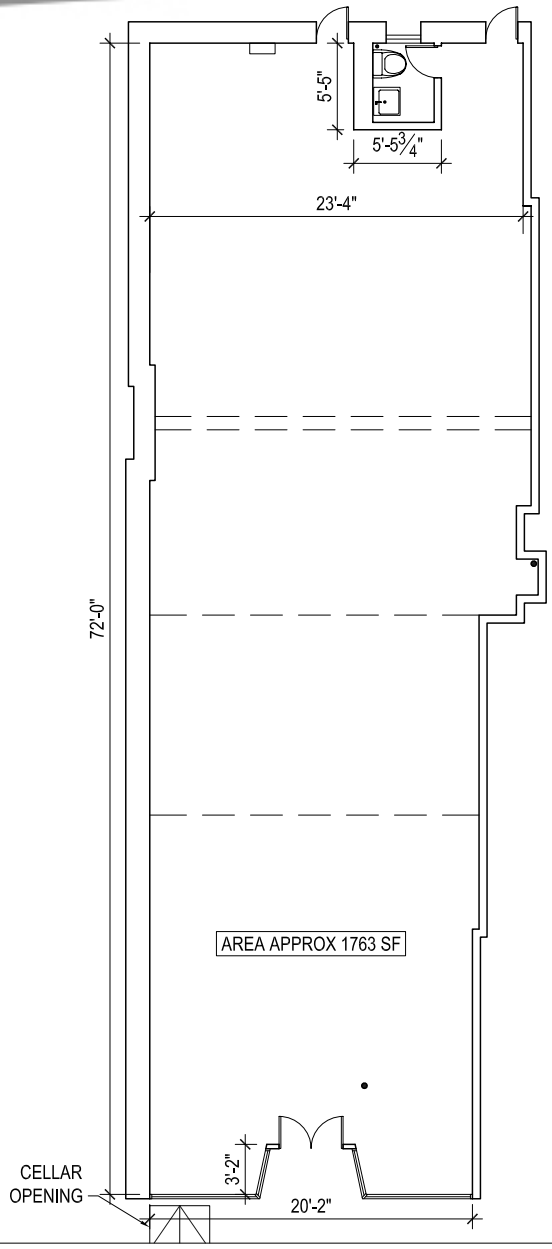
For More Information:

James Famularo 917.627.0111 jf@nycrs.com
Caryn Nadler 917.359.7731 cn@nycrs.com



UNIQUE LOWER EAST SIDE RETAIL SPACE

164 LUDLOW STREET (EAST HOUSTON AND STANTON)



<p>164 LUDLOW n ARCHITECTS, PLLC</p>	<p>Note NOT FOR CONSTRUCTION. THIS BUILDING PLAN IS FOR INFORMATION ONLY.</p>	<p>SCALE 1/8" = 1'-0" 11.06.08</p>
------------------------------------------	---------------------------------------------------------------------------------------	--------------------------------------------

For More Information:

James Famularo 917.627.0111 jf@nycrs.com
 Caryn Nadler 917.359.7731 cn@nycrs.com

